



POWERED BY METASOFT

Print Capture Software Installation & User Manual



CARDIAC DIAGNOSTICS

Tel: 0114 243 3896 • Fax: 0114 243 3413

E-Mail: info@numed.co.uk

<http://www.numed.co.uk>

Alliance House, Roman Ridge Road, Sheffield, U.K. S9 1GB

Software Version 5.82 Manual Version 3.2

Copyright Notice

Copyright © 2001-2004 by MetaSoft/Numed Cardiac Diagnostics. All rights reserved.

No part of the documentation may be reproduced, stored in a retrieval system or transmitted in any form, or by any means, electronic, mechanical, photocopy, recording or otherwise, without the prior consent of Numed Cardiac Diagnostics.

Information in this manual is subject to change without notice and does not represent a commitment on the part of Numed Cardiac Diagnostics.

This product is registered in the UK with the Medical Devices Agency.

License Agreement

The software described in this manual is supplied under the following license agreement and may only be used in accordance with the terms of that agreement.

This software and documentation are copyrighted. It is illegal to copy or distribute this software or the associated documentation without a site license from Numed Cardiac Diagnostics Ltd.(Numed).

Under the terms and conditions of each individual site license, the software may be installed in or accessed by up to a maximum of 10 client computer terminals housed within a single physical location. If the software is required to be installed in or accessed by more than 10 client computer terminals at a single physical location or the software is required at a separate physical location, additional site licenses must be appropriately secured from Numed.

Numed hereby grants you the right to make archival copies of this software solely for the purpose of protecting yourself against accidental loss or damage.

Warranty

Numed warrants the software media (i.e. diskettes) and documentation materials to be free from defects in workmanship and materials for a period of 60 days from date of purchase. Numed will replace any defective media or documentation materials returned to Numed during this period. This is the sole remedy for any such defects. Numed shall have no liability for any other damage.

NUMED DISCLAIMS ALL OTHER WARRANTIES, EXPRESS OR IMPLIED, INCLUDING BUT NOT LIMITED TO ANY WARRANTY OF NON-INFRINGEMENT OF THIRD PARTY RIGHTS AND THE IMPLIED WARRANTIES OF MERCHANTABILITY OR FITNESS FOR A PARTICULAR PURPOSE. IN NO EVENT SHALL NUMED BE LIABLE FOR ANY INDIRECT, CONSEQUENTIAL, OR SPECIAL DAMAGES, INCLUDING LOSS OF PROFITS, INCURRED BY ANY END-USER OR THIRD PARTY RESELLER OR ANY OTHER THIRD PARTY, WHETHER IN AN ACTION IN CONTRACT OR TORT OR BASED ON A WARRANTY, EVEN IF NUMED HAS BEEN ADVISED OF THE POSSIBILITY OF SUCH DAMAGES.

Trademarks

All brands and product names are trademarks or registered trademarks of their respective holders and are hereby acknowledged.

Numed Cardiac Diagnostics

Alliance House, Roman Ridge Road, Sheffield, UK, S9 1GB

Tel: 0114 243 3896 Fax: 0114 243 3413 E-Mail: info@numed.co.uk

Table of Contents

Introduction	3
What is ViewMed?	3
System requirements.....	3
Terms and conventions	4
Common Terms	4
Keyboard Conventions.....	4
Installation	5
Installing ViewMed.....	5
Configuration.....	8
Configuring ViewMed.....	8
Quick Setup	9
Advanced Setup	9
Output Directory	9
File Format	9
Naming Rules.....	9
Base Output Filename	9
Disable Control Dialog	10
Multiple Pages per File (TIFF/DCX only)	10
Launch Program after Printing.....	10
Using ViewMed.....	11
Setting ViewMed as the Default Printer.....	11
Using ViewMed as a Specific Printer.....	11
ViewMed TIFF File Viewer.....	13
<i>DECLARATION OF CONFORMITY</i>	14

Introduction

What is ViewMed?

ViewMed is a Windows based application that allows the generation of Image files in a variety of file formats, directly from other Windows applications. This enables electronic storage and retrieval systems to manipulate the data without the need to scan previously generated paper print outs.

ViewMed installs a print driver, accessible via the Windows Printers folder. A configuration utility is included, as is an image file viewer.

The image files generated can be stored either on the local PC or on another suitably configured PC or Network Files Server.

System requirements



The recommended minimum requirements for the ViewMed software are:

- 486DX 33MHz IBM compatible.
- 8MB RAM.
- VGA display, 800 x 600 minimum recommended screen resolution
- 1.44 MB floppy disk drive.
- At least 5MB of available hard disk space for the program (plus additional space to store the generated image files).
- Windows 95, 98, NT4, 2000, XP

Terms and conventions

Common Terms

The following common terms and conventions are used in this manual.

<i>Click</i>	Press the left mouse button once while pointing to an object on the screen.
<i>Double-click</i>	Press the left mouse button twice in rapid succession while pointing to an object on the screen.
<i>Choose</i>	Select a specific command or object using the technique you prefer.
<i>Select</i>	Pick an object, usually from a list. You can click the object with the mouse or use the arrow keys to highlight it, then press ENTER
<i>Drag</i>	While pointing to an object on the screen, press and hold down the left mouse button as you move the mouse.

Keyboard Conventions

All key names are shown in small capital letters. For example the Control key is shown as CTRL, the Escape key is shown as ESC.

Keys	Comments
Shortcut keys	Keys are frequently used in combination as shortcut keys. For example, CTRL+P means to hold down the CTRL key while pressing P.
Arrow keys (↑, ↓, →, ←)	You can use the UP ARROW, DOWN ARROW, LEFT ARROW, and RIGHT ARROW keys to move focus.

Installation

The **VSetup-5.82.exe** program on the installation CD-ROM is used to begin the installation of ViewMed.

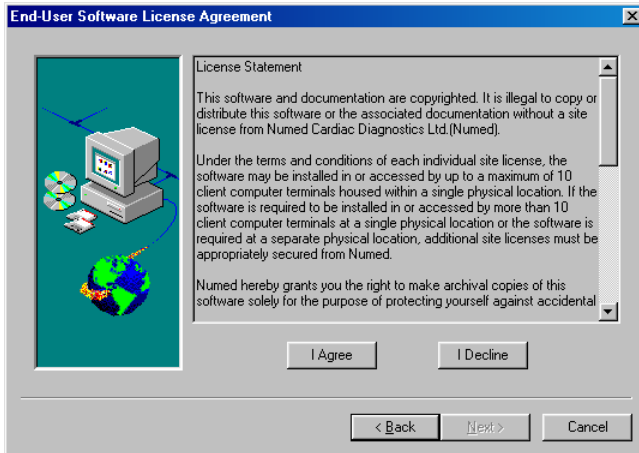
Installing ViewMed

1. Start Microsoft Windows. If using Windows 2000 or Windows XP, you **must** log on as a user with local Administrative rights.
2. Insert the ViewMed installation CD in to the drive. If after a few seconds the installation program starts automatically, go to step 5, otherwise continue as follows:
3. Click on the Windows Start button and then choose Run.
4. Type **D:\ VSetup-5.82.exe** (where D is the drive letter of your CD-ROM) and press ENTER.
5. As the installation begins, you will see the following screen:

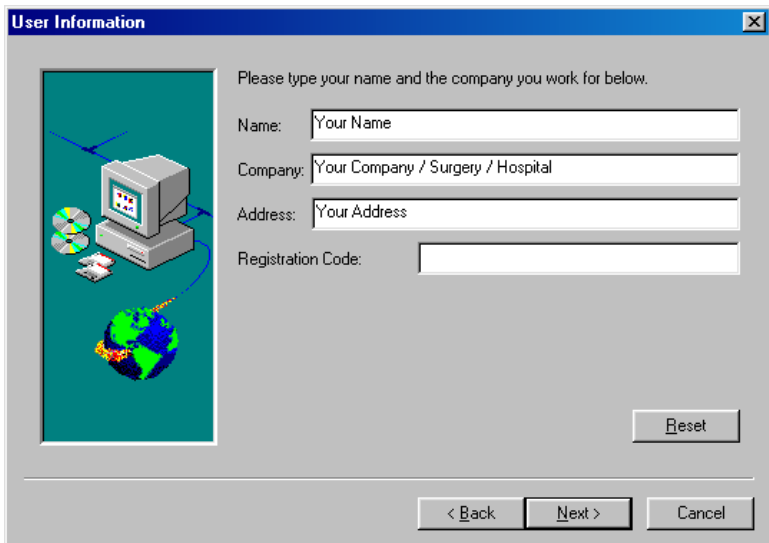


6. Follow the Setup instructions on the screen. The Setup program leads you through the installation process and prompts you to provide information and make several choices. The first screen relates to the End User License Agreement, which you must read and accept for the installation to proceed. If you do not agree to

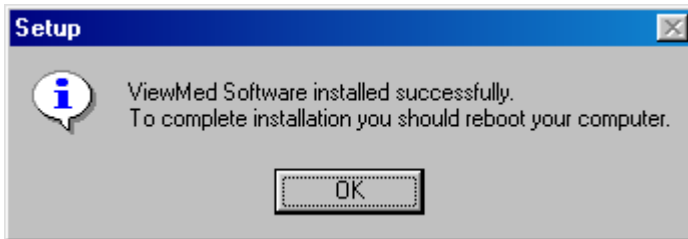
abide by the license terms and conditions, the installation will abort. The EULA Window is shown below:



7. You will then be asked to enter your personal registration information. The registration code is unique to each user. As a precaution against unauthorised use of the software, you will be asked to quote this registration code in the event of requiring telephone support, so **PLEASE KEEP THIS CODE IN A SAFE PLACE**. The user information Window is shown below:



8. Continue through the rest of the installation. It is recommended the default options be accepted.
9. If the installation completes successfully, you should see the following Window:



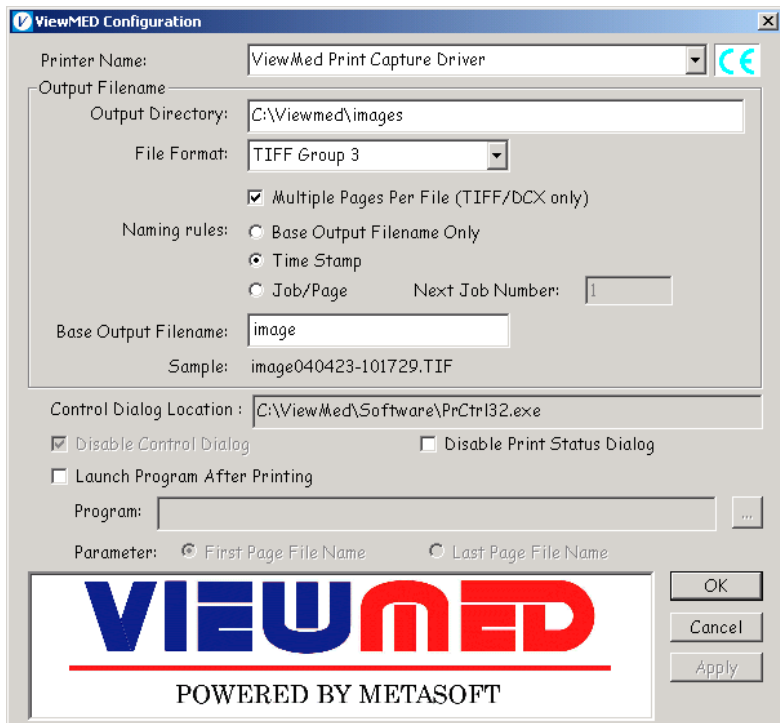
10. Complete the installation by clicking OK, then restarting your computer in the usual way.

Configuration

Once ViewMed is successfully installed, some initial configuration settings should be made. A configuration utility is provided to simplify this procedure.

Configuring ViewMed

1. Click the Windows **START** button, then **PROGRAMS**, then **VIEWMED SOFTWARE**, then choose **VIEWMED CONFIGURATION**. You will see the following Window:



Quick Setup

For a quick setup, simply accept the default settings shown in the ViewMed Configuration Window shown on the previous page.

Advanced Setup

The following section describes the function of each of the options available.

Output Directory

The location in which the generated image file will be stored.

File Format

The format of the generated image file. The chosen format will affect the image file size and resolution. For medical applications, TIFF Group 3 or 4 is recommended. This will produce the best resolution with the most efficient file size. You may wish to experiment with the setting to see which is best for your application.

Naming Rules

Base Output Filename Only – the image filename created will comprise only of the text in the Base Output Filename box. If the **Disable Control Dialogue** box is not checked, you will be presented with a prompt before the file is saved to amend the filename. **Caution** – if the Disable Control Dialogue box is checked whilst this naming rule is selected, the created image filename will always be the same, resulting in the most recent file replacing the previously created one. This overwriting process will occur without warning.

Time Stamp – the image filename created will comprise the text in the Base Output Filename box followed by the date and time the image was created. This is the recommended format if multiple image files are to be stored. As files are stored with a date/time tag, it removes the possibility of filename duplication.

Job/Page – the image filename created will comprise the text in the Base Output Filename box followed by a sequential job number. If the job consists of multiple pages stored in separate files, the page number will also be added to the filename. The **Next Job Number** box allows you to manually set the index for the next job number.

Base Output Filename

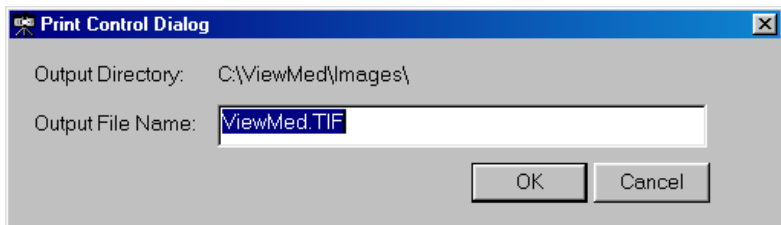
As described above, this is the default filename prefix given to the created image files.

Disable Control Dialog

When the Base Output Filename Only Naming Rule is selected, the filename Control Dialog box can be enabled or disabled.

When disabled (box ticked), the filename created will comprise only the text in the Base Output Filename box. **Caution** – if the Disable Control Dialogue box is checked whilst Base Output Filename Only Naming Rule is selected, the created image filename will always be the same, resulting in the most recent file replacing the previously created one. This overwriting process will occur without warning.

When enabled (box not ticked), the user is presented with the following prompt before the file is created:



The filename can then be amended if required.

Multiple Pages per File (TIFF/DCX only)

When ticked, image files that are over one page long will be generated as one, multi-paged file. When not ticked, image files over one page long will have a separate file created for each and every page. As indicated, this option is only available when one of the TIFF or DCX file formats is selected.

Launch Program after Printing

When ticked, the program specified in the Program box will be launched to display the generated image file. Ensure the specified program is compatible with the file type created. If no program is specified in the program box, the **ViewMed Tiff Viewer** supplied with the package will launch. If you do not wish to view the generated image file, clear the tick box.

Using ViewMed

ViewMed is used just like a printer. You can set your computer to use ViewMed as the default printer or just select ViewMed as a specific printer when printing from the application software.

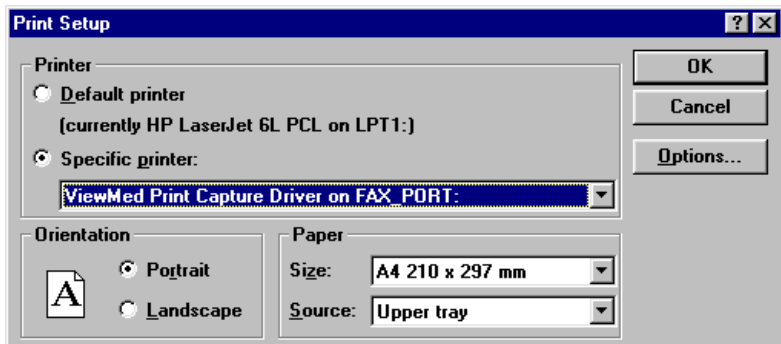
Setting ViewMed as the Default Printer

To set ViewMed as the default printer, click **START**, **SETTINGS**, **PRINTERS**, right click the ViewMed printer and left click **SET AS DEFAULT**.

When set as the default printer, any files printed will, by default, have an image file generated by ViewMed. The exact type and location of the file will be determined by the options set.

Using ViewMed as a Specific Printer

This varies from application to application, but as a general guide, from the application you are using, go to the print menu (this may need to be selected from the File menu rather clicking on a printer icon). Often you will then see a button called Printer or Printer Setup; click on this. You are then likely to see a Window similar to the one below:



From the drop-down list in specific printer, select the ViewMed Print Capture Driver, then click OK. Note that some application software

will automatically make the specific printer selected become the default printer. Other applications will leave the default printer unaltered.

Image files are generated very quickly and stored in the location specified in the ViewMed Configuration Settings.



ViewMed TIFF File Viewer

Included with the product is a TIFF file viewer. The ViewMed TIF viewer is a general-purpose file viewer, specifically aimed at image files in a variety of formats.

Instructions for the use of this product can be found in the Help file accessed from the ViewMed program folder. (**START, PROGRAMS, VIEWMED, VIEWMED TIFF VIEWER HELP**)

DECLARATION OF CONFORMITY

Manufacturer's Name: Metasoft Systems Inc
Manufacturer's Address: Suite 203-1080 Howe Street,
Vancouver, Canada BCV6C 2T1

declares that the product:

Product Name: ViewMed Print Capture Driver (Stand
Alone Software Product) – Class I
Device

**Authorised Representative
Name:** Numed Cardiac Diagnostics

**Authorised Representative
Address:** Alliance House, Roman Ridge Road,
Sheffield, UK, S9 1GB

Conforms with the essential requirements and provisions of Council
Directive 93/42/EEC concerning medical devices and has applied the
CE mark to this product.

